



# Radisson Blu Hotel

## Istanbul Ottomare

FEEL THE DIFFERENCE



# HOTEL AT A GLANCE

## LOCATION

- Distance to City Centre: 10 km
- Distance to CNR Expo: 10 km
- Distance to Old City: 9 km
- Distance to Istanbul Airport: 50km

## FACILITIES

- 133 Rooms, most with a view of the Sea of Marmara
- 4 meeting rooms with a capacity of 100 pax in total, all with daylight
- Restaurant & Terrace, Turkish cuisine
- Lobby Lounge & Patisserie
- Outdoor seating available in all outlets
- 1000 sqm SAP Centre with fitness centre, indoor & outdoor pool and VIP spa suite with private hamam, steam bath, Jacuzzi & massage room



## SURROUNDINGS

### **Aquarium:**

Florya Aquarium

### **Sport Center:**

Atatürk Olympic Stadium

Sinan Erdem Sports Arena

Veli Efendi Hippodrome

Ahmet Cömert Sports Arena

### **Shopping Centers:**

Marmara Forum

Galleria

Olivium Outlet

Capacity

Carousel

Ataköy Marina Park AVM

### **Restaurant and Cafe:**

Kumkapı

Ataköy Marina

Fişekhane Street

### **Shopping Districts:**

Grand Bazaar

Spice Market

### **Historic Monuments:**

Blue Mosque

Hagia Sophia

Old Hippodrome

Topkapı Palace

Dolmabahçe Palace

FEEL THE DIFFERENCE

# WHY RADISSON BLU HOTEL, ISTANBUL OTTOMARE?



- Only 10 minutes driving distance to Old City, Blue Mosque, Hagia Sophia, Topkapi Palace, The Grand Bazaar
- Conveniently located within 10 minutes to nearby big shopping malls: Marmara Forum, Capacity, Carousel, A Plus.
- 10 minutes from the Eurasia Tunnel and the closest 5-star hotel to the tunnel
- Walking distance to Istanbul Race Course, home of Turkey's leading horse races including international trophy races during the summer months.
- Perfectly located within 50 minutes driving distance to Istanbul Airport.

FEEL THE DIFFERENCE

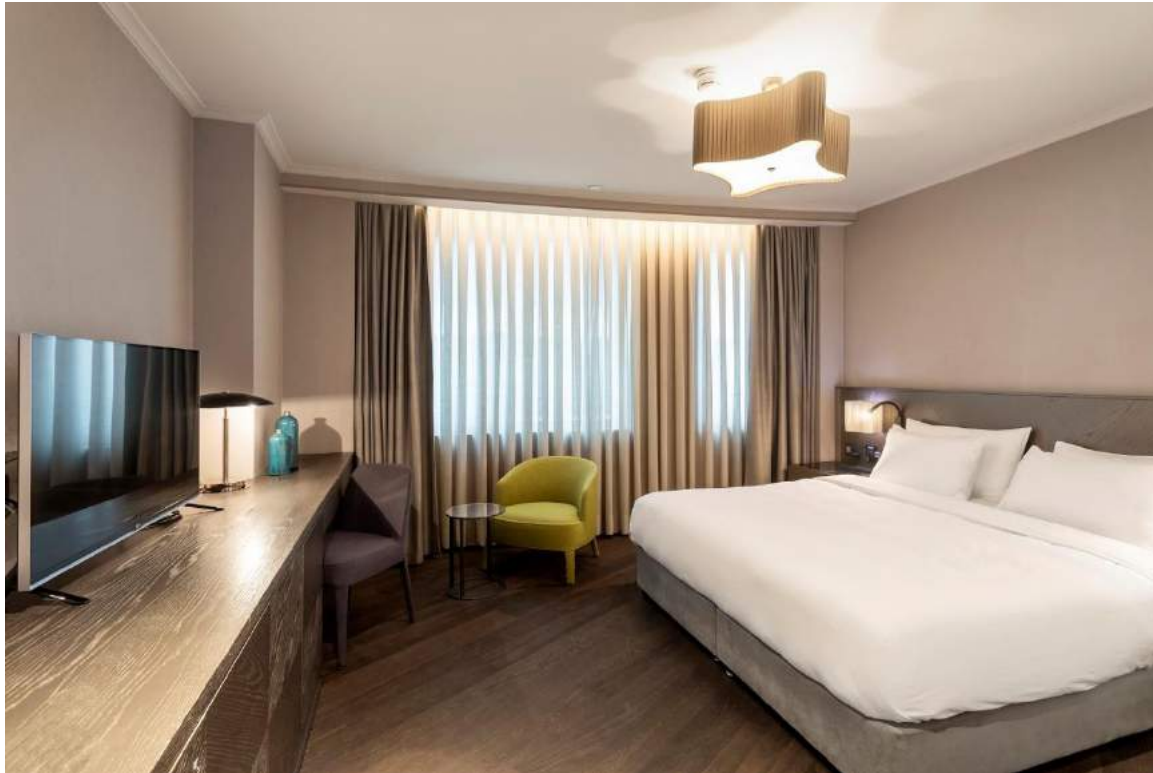


# WHY RADISSON BLU HOTEL, ISTANBUL OTTOMARE?

- Hotel set among beautiful gardens with outdoor seating available in all F&B outlets creating a resort type ambiance in the city.
- Friendly service and hospitality offered with the “**Yes I Can!**” philosophy
- Direct access to seaside road park with jogging facilities.  
**#Bluroutes**
- Distance from main business areas:
  - CNR Expo: 10 minutes
  - Yenibosna – Güneşli – İkitelli: 20 minutes
  - TÜYAP Exhibition Center: 30 Minutes

# STANDARD ROOMS

Standard Rooms are 24 sqm with city view.



FEEL THE DIFFERENCE

# STANDARD ROOMS WITH BALCONY

Standard Rooms with Balcony are 25 sqm and have private balconies and sea view. (The sea view of Standard Rooms differs according to the structure of the building. Some of standard rooms have a view of the sea and some of them have a partial view of the sea.)



FEEL THE DIFFERENCE

# PREMIUM ROOMS

Premium Rooms are 25-30 sqm and have private balconies with sea view or garden view.



FEEL THE DIFFERENCE



# JUNIOR SUITE

Junior Suites are 40 sqm and have private balconies with sea view or garden view.



FEEL THE DIFFERENCE

# SUITE

Suite Rooms are 50 sqm and have private balconies with sea view or garden view.



FEEL THE DIFFERENCE

# PRESIDENTIAL SUITE

Presidential Suite is 104 sqm, has a sea view, separate bedroom and living room, 2 bathrooms, bathtub with sea view and two balconies.



FEEL THE DIFFERENCE

# ROOMS

Total Number of Rooms:133

	ROOM DESCRIPTION	KEY FEATURES
STANDARD ROOM (16 rooms)	+/- 24 sqm, city view	Standard rooms have a luggage seat, safe box, minibar, tea and coffee facilities, iron-ironing board, TV and marble bathroom.
STANDARD BALCONY ROOMS (31 rooms)	+/- 25 sqm , partial sea view	Furnished balcony with sea view and Standard Room features
PREMIUM ROOMS (61 rooms)	+/- 25-30 sqm, sea or garden view	Upgraded nespresso machine, bathrobe & Standard Balcony Room features
JUNIOR SUITE (14 rooms)	+/- 40 sqm, sea or garden view	Dining table & Premium Room features
SUITE (10 rooms)	+/- 50 sqm, sea or garden view	Rooms with bathtub & Junior Suite features
PRESIDENTIAL SUITE (1 room)	104 sqm, sea view	Separate bedroom and living room, 2 bathrooms, bathtub with sea view, special w.c. with remote control, two balconies

F E E L   T H E   D I F F E R E N C E

# RESTAURANT & TERRACE

Outdoor seating available  
with sea view among  
beautiful gardens by the  
pool

FEEL THE DIFFERENCE

# LOBBY BAR & PATISSERIE

Daily freshly made products are exhibited at the Lobby Bar & Patisserie located at the entrance of the restaurant.

FEEL THE DIFFERENCE

# MEETING ROOMS

MEETING ROOM 1 & 2

MEETING ROOM 3



FEEL THE DIFFERENCE

# MEETING ROOMS

MEETING ROOM 4

PDR (Private Dining Room)



FEEL THE DIFFERENCE



# RESTAURANT & MEETING ROOMS FLOOR PLAN



FEEL THE DIFFERENCE

# MEETING ROOMS

## CAPACITY CHART

Meeting Rooms	Square Meter	Height (m)	Width (m)	Length (m)								
<b>Meeting Rooms</b>												
Meeting Room 1	30	3	10	3	—	—	—	—	—	8	—	—
Meeting Room 2	30	3	10	3	—	—	—	—	—	8	—	—
Meeting Room 3	65	3	10	6,5	—	—	20	20	10	10	12	10
Meeting Room 4	60	3	10	6	—	—	—	—	—	12	—	—
Private Dining Room ( PDR )	56	3	7	8	—	—	—	—	—	10	—	—
Restaurant	154	3	22	7	60	30	50	—	—	—	—	—

FEEL THE DIFFERENCE

# Exclusive Wellness & SPA



Hotel guests can benefit from the spa center of 1,000 square meters, with indoor and outdoor pools, free of charge.



Spa center has a fitness center with pool view, sauna, Turkish bath, massage room and steam room. There are separate wet areas for women and men.



Private VIP Spa Suite with a steam bath, jacuzzi, sauna and treatment room.

F E E L   T H E   D I F F E R E N C E

Radisson  BLU

FEEL THE DIFFERENCE